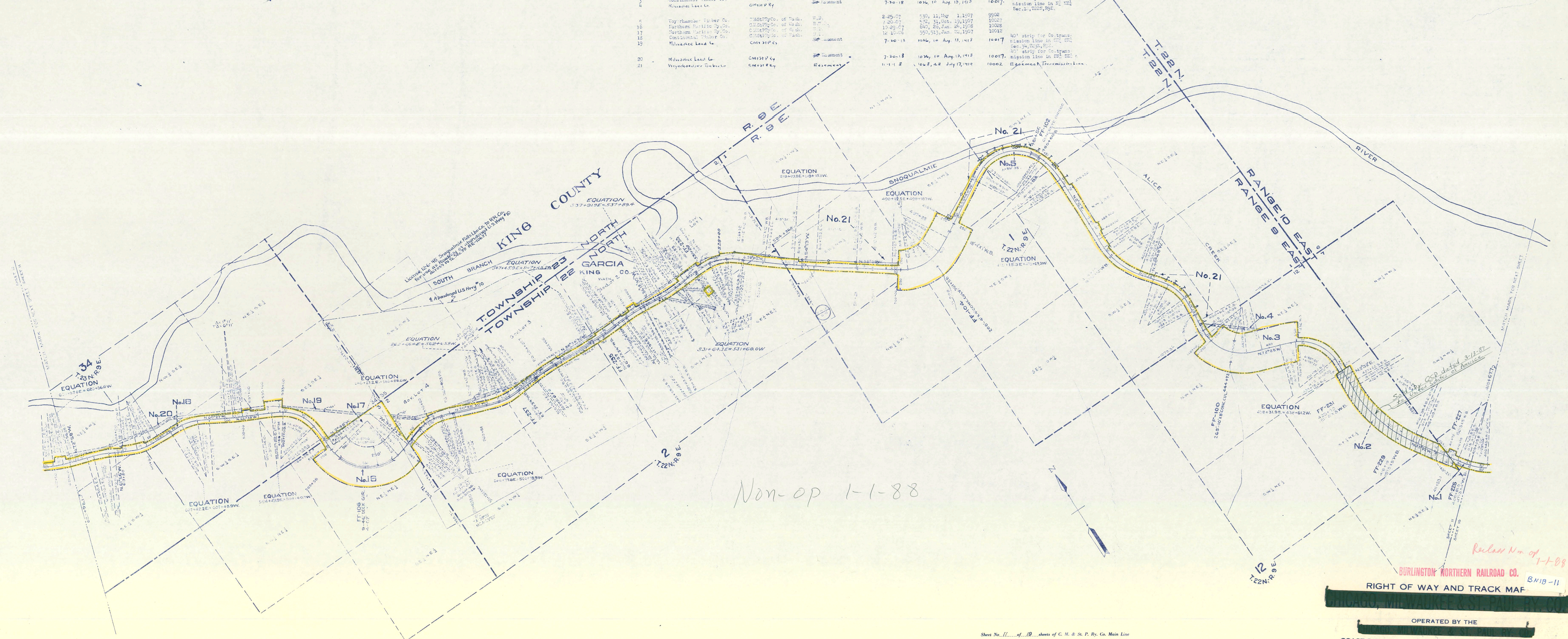


PARCEL NUMBER	OWNER	CLASSIFICATION	INSTRUMENT	DATE	RECORD	CUSTOMER'S NO.	REMARKS
1	Weyerhaeuser Timber Co. United States	Timber	W.D. Grant & Pilling Map	4-25-07	550, 11, May 1, 1907	9902	Act of Congress 3-3-75
2	Continental Timber Co.	Timber	W.D. Grant & Pilling Map	11-17-06	550, 513, Jan. 22, 1907	10012	40' strip for Co. transmission line in M. 1003 Sec. 1, T. 22N., R. 9E.
3	Milwaukee Lead Co.	Lead	W.D. Grant & Pilling Map	7-30-18	1036, 10 Aug. 13, 1918	10017	40' strip for Co. transmission line in M. 1003 Sec. 1, T. 22N., R. 9E.
4	Weyerhaeuser Timber Co.	Timber	W.D. Grant & Pilling Map	2-25-07	550, 11, May 1, 1907	9902	
5	Northern Pacific Ry. Co.	Railroad	W.D. Grant & Pilling Map	7-29-07	578, 11, Dec. 10, 1907	10027	
16	Northern Pacific Ry. Co.	Railroad	W.D. Grant & Pilling Map	10-23-07	640, 29, Jan. 24, 1908	10028	
17	Continental Timber Co.	Timber	W.D. Grant & Pilling Map	14-10-06	550, 513, Jan. 22, 1907	10012	
18	Milwaukee Lead Co.	Lead	W.D. Grant & Pilling Map	7-30-18	1036, 10 Aug. 13, 1918	10017	40' strip for Co. transmission line in M. 1003 Sec. 1, T. 22N., R. 9E.
19	Milwaukee Lead Co.	Lead	W.D. Grant & Pilling Map	7-30-18	1036, 10 Aug. 13, 1918	10017	40' strip for Co. transmission line in M. 1003 Sec. 1, T. 22N., R. 9E.
20	Milwaukee Lead Co.	Lead	W.D. Grant & Pilling Map	7-30-18	1036, 10 Aug. 13, 1918	10017	40' strip for Co. transmission line in M. 1003 Sec. 1, T. 22N., R. 9E.
21	Weyerhaeuser Timber Co.	Timber	W.D. Grant & Pilling Map	11-1-18	1048, 48 July 17, 1918	10022	40' strip for Co. transmission line in M. 1003 Sec. 1, T. 22N., R. 9E.



5 Wires of the Postal Telegraph Cable Co. of Wash. are hung on Railway Co's Telegraph Pole Line between Atak Depot and a point 3.5 Mi. west of Garcia at about station 74000. See Agmt. No. N-3498, dated Oct. 10, 1927, R.E. No. 216.

Sheet No. 11 of 18 sheets of C. M. & St. P. Ry. Co. Main Line from survey station 408+67.7 to survey station 620+98.1

A. E. Lodge
Valuation Engineer

BURLINGTON NORTHERN RAILROAD CO.
RIGHT OF WAY AND TRACK MAP

OPERATED BY THE
COAST DIVISION TO STATION 620+98.1
STATION 408+67.7 MAIN LINE
SCALE: 1 IN. = 4 MILES
JUNE 30, 1918
OFFICE OF VALUATION ENGINEER
CHICAGO, ILLINOIS.

